



## International Dragon Class

### World Championship for The Royal Hellenic Cup 4 – 12 June 2015 LA ROCHELLE – FRANCE

# SAILING INSTRUCTIONS

## 1. ORGANISING AUTHORITY

Société des Régates Rochelaises and the Fédération Française de Voile (FFV), in association with the International Dragon Association (IDA) and the Association France Dragon (AFD).

## 2. RULES

2.1 The official language is English

2.2 The regatta will be governed by:

- The *Rules* as defined in the Racing Rules of Sailing (RRS) 2013-2016.
- The Rules and Regulations of the International Dragon Association and the Dragon World Championship Rules will apply.
- The measurement regulations delivered upon registration.
- The prescriptions of the National Authority are stated in Appendix C.

2.3 In the event of conflict between the notice of race and the sailing instructions, the sailing instructions shall prevail (this changes RRS 63.7).

2.4 The following *rules* are changed by these SI's: Race Signal AP; RRS Part 4 preamble; 26; 27.1, 28.1; 29.1; 32; 35; 44.1; 60.1(a); 61.1(b); 61.3; 62.1(a); 62.2; 63.1; 66; 63.7; A4; A5; A11; P2.2 and P2.3.

## 3. NOTICES TO COMPETITORS

3.1 Notices to competitors will be posted on the official notice board located in the marquee.

3.2 Safety and other information when afloat will be broadcasted on VHF on channel 72. Call sign 'Race Committee'.

## 4. CHANGES TO SAILING INSTRUCTIONS

Any change to the sailing instructions will be posted at least two hours before the 1<sup>st</sup> scheduled warning signal for the first race of the day on the day it will take effect, except that any change to the schedule of races will be posted before 20.00 on the day before it will take effect. A change to the SI's will be signalled by displaying code flag L above a numeral pennant corresponding to the number of the change.

## 5. SIGNALS MADE ASHORE

5.1 Signals made ashore will be displayed from the flagpole on the terrace of the Club House.





- 5.2 When flag AP is displayed ashore, “1 minute” is replaced with “not less than 60 minutes” in RRS “Race Signal AP”. When AP is displayed ashore, boats are requested not to leave the marina until flag AP is lowered. This changes Race Signal AP.
- 5.3 When flag Y is displayed ashore and/or on the Committee Boat, rule 40 applies at all times while afloat. This changes RRS Part 4 preamble.

## 6. SCHEDULE

### 6.1 Registration:

Registration will take place on  
 Thursday June 4<sup>th</sup> 14.00 to 18.00  
 Friday June 5<sup>th</sup> 10.00-12.00 & 14.00-18.00  
 Saturday June 6<sup>th</sup> 10.00-12.00 & 14.00-18.00

### 6.2 Measurement and Inspection:

Measurement and Inspection will take place on  
 Thursday June 4<sup>th</sup> 14.00 to 18.00  
 Friday June 5<sup>th</sup> 10.00-12.00 & 14.00-18.00  
 Saturday June 6<sup>th</sup> 10.00-12.00 & 14.00-18.00

6.3 There will be a skippers briefing at 9.30 on June 7<sup>th</sup> in the marquee.

### 6.4 Dates of racing:

Day	Date	Time	Event	HT	LT
Saturday	6th June	14.00	Practice race	20.16	14.07
Sunday	7th June	13.00	First Warning Signal for one race	21.17	14.55
Monday	8th June	13.00	First Warning Signal for races	9.52	15.47
Tuesday	9th June	13.00	First Warning Signal for one race	11.17	16.46
Wednesday	10th June	13.00	First Warning Signal for races	12.33	17.52
Thursday	11th June	13.00	First Warning Signal for one race	13.41	19.01
Friday	12th June	10.00	First Warning Signal for one race	14.41	20.08

Tidal predictions are for Les Minimes Marina.

- 6.5 When more than one race is held on the same day, the warning signal for the next race will be made as soon as possible after the end of the first race. For all races, to alert boats that a race will begin soon, orange flags will be displayed on the committee boats marking the line (with one long sound signal) no less than 10 minutes before the warning signal is displayed.
- 6.6 On the last day of the regatta, no warning signal will be made after 14.00 local time.
- 6.7 The Race Committee may run two or more races on any day if the number of races sailed falls behind schedule.

## 7. RACE AREA

Attachment A shows the location of the racing area.

## 8. COURSES

See Attachment B.





8.1 Start – 1 – 2 – Gate 3(s) 3(p) – 1 – 2 – Gate 3(s) 3(p) – finish.

On the first leg of the course, Marks 3(s) and 3(p) (if laid) will not be marks of the course.

8.2 The courses will be windward-leeward. The diagram in Attachment B shows the courses, including the order in which marks are to be passed, and the side on which each mark is to be left.

8.3 No later than the warning signal, the race committee signal boat will display the approximate compass bearing and length of the first leg.

8.4 The race will not be shortened before the end of the leg to Mark 1 for the second time. This changes Rule 32.

## 9. MARKS

9.1 Marks 1, 2 and 3s/3p will be inflatable tetrahedral orange buoys.

9.2 New marks, as provided in instruction 12.1, will be inflatable tetrahedral black buoys.

9.3 The starting marks will be two RC Boats (see SI 11.1).

9.4 The finishing marks will be a cylindrical white buoy and a RC Boat (see SI 12.1).

9.5 A race committee boat signalling a change of a leg of the course is a mark as provided in instruction 12.2.

9.6 The inner distance mark (if any) will be cylindrical black.

9.7 Class flag will be the Class insignia.

## 10. REPORTING TO THE MAIN COMMITTEE BOAT BEFORE STARTING

Before starting the first race of the day, boats shall, while sailing on starboard tack, pass at the stern of the principal race committee boat and make sure they are acknowledged by the RC. Boats failing to report may be scored "DNS".

## 11. THE START

11.1 The starting line will be between a staff on the race committee boat displaying an orange flag on the starboard end of the starting line and a staff displaying an orange flag on the race committee on the port end of the starting line. The orange flags hoisted on the committee boats in accordance to SI 6.5 will also indicate that the starting vessels are “on station”, and will not thereafter be moved before the start. If it becomes necessary to move the starting marks, the orange flags will be lowered and the start postponed. This changes RRS 27.2. Orange flags will not be removed for starting line adjustments.

11.2 Races will be started using rule 26 in adding Code Flag U among the possible Preparatory signals.

11.3 A boat starting later than 5 minutes after her starting signal will be scored Did Not Start. This changes rules A4 and A5.

11.4 Boats to be scored BFD or UFD and disqualified under RRS 30.3 may be indicated, in the absence of a general recall, before Mark 1 by a race management rib (numbers on board and Black or U flag) and boats so notified should then leave the course. Failure to make the signal and/or display the sail number and/or to radio the announcement shall not be grounds for redress. This changes rule 62.1(a).

11.5 The race committee boats on, or in the vicinity of the starting line may maintain their position by using their engine(s).

11.6 If Flag U has been displayed as the preparatory signal, no part of a boat’s hull, crew, or equipment shall be in the triangle formed by the ends of the starting line and the first mark during the last minute before her starting signal. If a boat breaks this rule and is identified, she shall be disqualified without a hearing but not if the race is restarted or re sailed or postponed or abandoned before the starting signal.





This changes RRS 26 and 63.1. When Flag U is used as the preparatory signal, RRS 29.1 does not apply. The scoring abbreviation for a Flag U penalty is UFD. This changes RRS A11.

11.7 An inner distance mark may be laid adjacent to the Principal Race Committee boat, not necessarily on the starting line, and, if laid, is a starting mark and shall be left to starboard.

## 12. CHANGE OF THE NEXT LEG OF THE COURSE

12.1 The course may be changed in accordance with RRS 33. When in a subsequent change a new mark is replaced, it will be replaced by the original mark.

12.2 Except at a gate, boats shall pass between the race committee boat signalling the change of course and the nearby mark leaving the mark to port and the race committee vessel to starboard. This changes RRS 28.1.

12.3 If a change of course is made at mark 2, marks 3s/3p may be substituted by a single mark to be left to port.

12.4 If a change of course is made at marks 3s/3p, mark 2 will not be used, and thus will not be part of the course anymore.

## 13 THE FINISH

13.1 The finishing line will be between a staff on the Race Committee boat displaying a Blue Flag and a White Buoy.

13.2 After finishing, boats shall clear the finishing area (RRS 24).

## 14. PENALTY SYSTEM

14.1 RRS 44.1 applies modified as follows: one turn penalty instead of two turns penalty.

14.2 Appendix P will apply. Rule P2.3 will not apply and rule P2.2 is changed so that it will apply to any penalty after the first one.

## 15. TIME LIMITS

15.1 The time limit is 4 hours from the valid start, except on the last day of the regatta or where there are two or more races scheduled on any day when the time limit for each race shall be 3 hours.

15.2 Boats failing to finish within 60 minutes after the first boat sails the course and finishes, and when the time limit is 3 hours within 30 minutes after the first boat sails the course and finishes, will be scored Did not finish. This changes rules 35, A4.1 and A5.

15.3 If no boat has passed mark 1 for the first time within 75 minutes of the start, the race will be abandoned.

## 16. PROTESTS AND REQUESTS FOR REDRESS

16.1 Protest forms are available at the race office. Protests and requests for redress shall be delivered there within the protest time limit.

16.2 The protest time limit is 90 minutes after the last boat has finished the last race of the day. This time will be posted on the official notice board. The same protest time applies to all protests by the race committee and jury and requests for redress. This changes Rules 61.3 and 62.2

16.3 Notices will be posted within 15 minutes of the protest time limit to inform competitors of hearings in which they are parties or named as witnesses. Hearings will be held in the Jury Room, located at the SRR ground floor, beginning as soon as possible. It is the responsibility of the protestor and the protestee to make themselves and their witnesses available for the hearing.





- 16.4 Notice of protest by the race committee or jury will be posted to inform competitors under rule 61.1(b). By the display of such notice, competitors shall be considered adequately informed of a protest by the race committee or the jury.
- 16.5 If a member of the jury, whilst afloat on the course, witnesses an infringement, he may signal with a whistle while displaying a RED flag if no boat protests. Such penalty shall be one turn (Changes RRS 44.1). If no penalty turn is taken by an infringing boat, the Jury will again signal with a whistle while aiming a RED flag at the boat. The penalty shall then be two turns. If no penalty is taken and/or no protest lodged by a competitor the International Jury will protest one or more identified boats under RRS 60.3. Action or inaction by the International Jury shall not be grounds for redress.
- 16.6 Normal procedure for protesting (from a boat, the RC or the Jury) still applies.
- 16.7 For the purposes of rule 64.3(b) the "authority responsible" is the Measurer or Equipment Inspector appointed by the organising authority.
- 16.8 Breaches of instructions 4.3, 17, 18, 20 (except 20.2 & 20.3), 21, 22, 23 and 27 will not be grounds for a protest by a boat. This changes Rule 60.1(a). Penalties for these breaches SI's 20.2 and 20.4 or breaches of the Class Rules discovered by measurer's spot checks during the regatta may be less than disqualification if the jury so decides. Protests arising from a breach of SI 20.2 or 20.3 must be made by a competitor disadvantaged by the breach and must be made against the boat(s) served by the coach boat. This changes RRS 60.1(a).
- 16.9 On the last day of the regatta a request for reopening a hearing shall be delivered:
- (a) within the protest time limit if the party requesting reopening was informed of the decision on the previous day.
  - (b) no later than 30 minutes after the party requesting reopening was informed of the decision on that day.
  - (c) on the last day, within 30 minutes after the abandonment signal is displayed if racing is abandoned ashore, or within 90 minutes after the abandonment signal is displayed if abandoned afloat This changes RRS 66.
- 16.10 Decisions of the International Jury will be final as provided in RRS 70.5

## 17. SCORING

- 17.1 For the purposes of RRS A4.2 the number of boats entered in the series shall be those that have satisfied the entry and registration requirements.
- 17.2 Eight races are scheduled of which five races are required to constitute a series.
- 17.3 Discards:
- (a) When fewer than six races have been completed, a boat's series score will be the total of her race scores.
  - (b) When six or more races have been completed, a boat's series score will be the total of her race scores excluding her worst score.
- 17.4 Corinthian boats will also be scored separately in accordance with the Notice of Race 12 for the Corinthian Trophy.
- 17.5 Prizes will be given as stated in the Notice of Race

## 18. SAFETY REGULATIONS

- 18.1 Safety equipment shall be carried in accordance with Class Rules.
- 18.2 Boats not leaving their moorings for racing shall inform the Race Office before the scheduled start.
- 18.3 Boats retiring shall make every effort to inform the Race Committee before leaving the racing area. Alternatively the Race Office should be informed on returning to shore.





## 19. REPLACEMENT OF CREW OR SAILS

- 19.1 Substitution of crew or sails will not be allowed without prior written approval of the Race Committee. Such approval shall only be given for good and sufficient reason(s). If a member of the crew is replaced, the whole new crew shall be weighed and meet the weight restriction before starting a race with the new crew.
- 19.2 Substitution of damaged sails will not be allowed unless approved by the race committee. Requests for substitution shall be made to the committee at the first reasonable opportunity.

## 20. EQUIPMENT AND MEASUREMENT CHECKS

A boat or equipment may be inspected at any time for compliance with the class rules and sailing instructions. Upon instruction by the Race Committee, International Jury or Event Measurer, a boat shall immediately proceed to a designated area for inspection.

## 21. IDENTIFICATION WHILE RACING

Each day, the first, second and third boats in series ranking at the beginning of the day shall display a yellow, blue and red bib on the crew respectively. The organising authority will supply the bibs and instructions for their use.

## 22. SUPPORT BOATS

- 22.1 Support, including coach, press, private and spectator boats shall register at the Race Office during the registration period (SI 6.1) and be issued with an identity flag, such flag to be worn at all times when afloat. The person in charge of the competing boat(s) to which support boats are attached shall acknowledge the presence of a support boat on his registration form and pay any fee for the support boat decided by the OA
- 22.2 Subject to SI 21.6 and unless otherwise instructed by the Race Committee, team leaders, coaches and other support boats shall stay to more than 100 meters to leeward of the starting line and from the leeward marks and from any racing boat from the time of the preparatory signal until all boats have finished or the Race Committee signals a postponement, general recall or abandonment.
- 22.3 Any support boats entering the restricted area or impeding a competitor shall be liable to a penalty imposed on their competing boat for breach of this SI.
- 22.4 Support boats shall not pass any information by any means whatsoever to competitors who are racing (RRS 41).
- 22.5 Communication by radio (including mobile phones) is prohibited between competitors and any support boats. Support boats shall not communicate with or transfer goods or equipment to or from, their competing boats from the time of the preparatory signal until all boats have finished or the Race Committee signals a postponement, general recall or abandonment.
- 22.6 At all times, support boats shall comply with the directions given by the Race Committee. In particular this includes assisting with rescues when requested to do so.
- 22.7 Support boats must be on call on VHF Channel 72 at all times

## 23. LAUNCHING AND HAUL-OUT RESTRICTIONS

- 23.1 All boats shall be afloat before 18.00 on June 6<sup>th</sup> and berthed in the area allocated.
- 23.2 Boats shall not be hauled out during the regatta except with, and according to, the terms of prior written permission of the Race Committee.





## 24. DIVING EQUIPMENT AND PLASTIC POOLS

Underwater breathing apparatus and plastic pools or their equivalent shall not be used around keel boats after 18.00 on June 6<sup>th</sup> until the end of the regatta. The use of wet suits but no other diving equipment is permitted.

## 25. VHF RADIOS

25.1 Boats may carry one VHF receiver. The Race Committee may use VHF to communicate to the fleet including information on the start area, countdown to the starting signals, OCS boat numbers (after at least two minutes have elapsed from the start), general recalls and postponements, and black flag DSQ boat numbers. Failure to make such broadcasts and failure to hear them shall not be grounds for redress.

25.2 Except in an emergency, a boat shall neither make nor receive radio transmissions not available to all competitors while *racing*. This restriction applies to receipt of data by any electronic equipment including mobile phones and watches providing data other than time. If mobile phones and/or watches capable of receiving and using GPS to aid starting are found during any measurement checks, it will be assumed by the International Jury that they have been used. All electronic equipment other than tracking units supplied by the Organising Authority, one VHF receiver per boat, timers and compasses permitted by the Class Rules shall be switched off whilst *racing*.

## 26. OFFICIAL BOATS

Official boats will be marked as follows:

Category	Flag
Race Committee Boats	Yellow Flag
Jury Boats	Yellow Flag with Dark Blue "Jury"
Measurer boat	Flag with "M"
Press Boats	Orange flag with "SRR"
Coach and support boats	Number on sticker

## 27. DISCLAIMER OF LIABILITY

### Risk Statement

Rule 4 of the Racing Rules of Sailing states: "The responsibility for a boat's decision to participate in a race or to continue racing is hers alone."

Sailing is by its nature an unpredictable sport and therefore inherently involves an element of risk. By taking part in the event, each competitor agrees and acknowledges that:

- They are aware of the inherent element of risk involved in the sport and accept responsibility for the exposure of themselves, their crew and their boat to such inherent risk whilst taking part in the event;
- They are responsible for the safety of themselves, their crew, their boat and their property whether afloat or ashore;
- They accept responsibility for any injury, damage or loss to the extent caused by their own actions or omissions;
- Their boat is in good order, equipped to sail in the event and they are fit to participate;
- The provision of a race management team, patrol boats and other officials and volunteers by the event organiser does not relieve them of their own responsibilities;





- f) The provision of patrol boat cover is limited to such assistance, particularly in extreme weather conditions, as can be practically provided in the circumstances;
- g) They are responsible for ensuring that their boat is equipped and seaworthy so as to be able to face extremes of weather; that there is a crew sufficient in number, experience and fitness to withstand such weather; and that the safety equipment is properly maintained, stowed and in date and is familiar to the crew
- h) Their boat is adequately insured, with cover of at least € 1,000,000 against third party claims.

### Inspections

The fact that the race committee conducts inspections of a boat does not reduce the responsibilities of each competitor set out in this SI.

## 28. ADVERTISING

In accordance with Regulation 20.4.1 boats shall display sponsor advertising stickers supplied by the organising authority.

## 29. RACE OFFICIALS

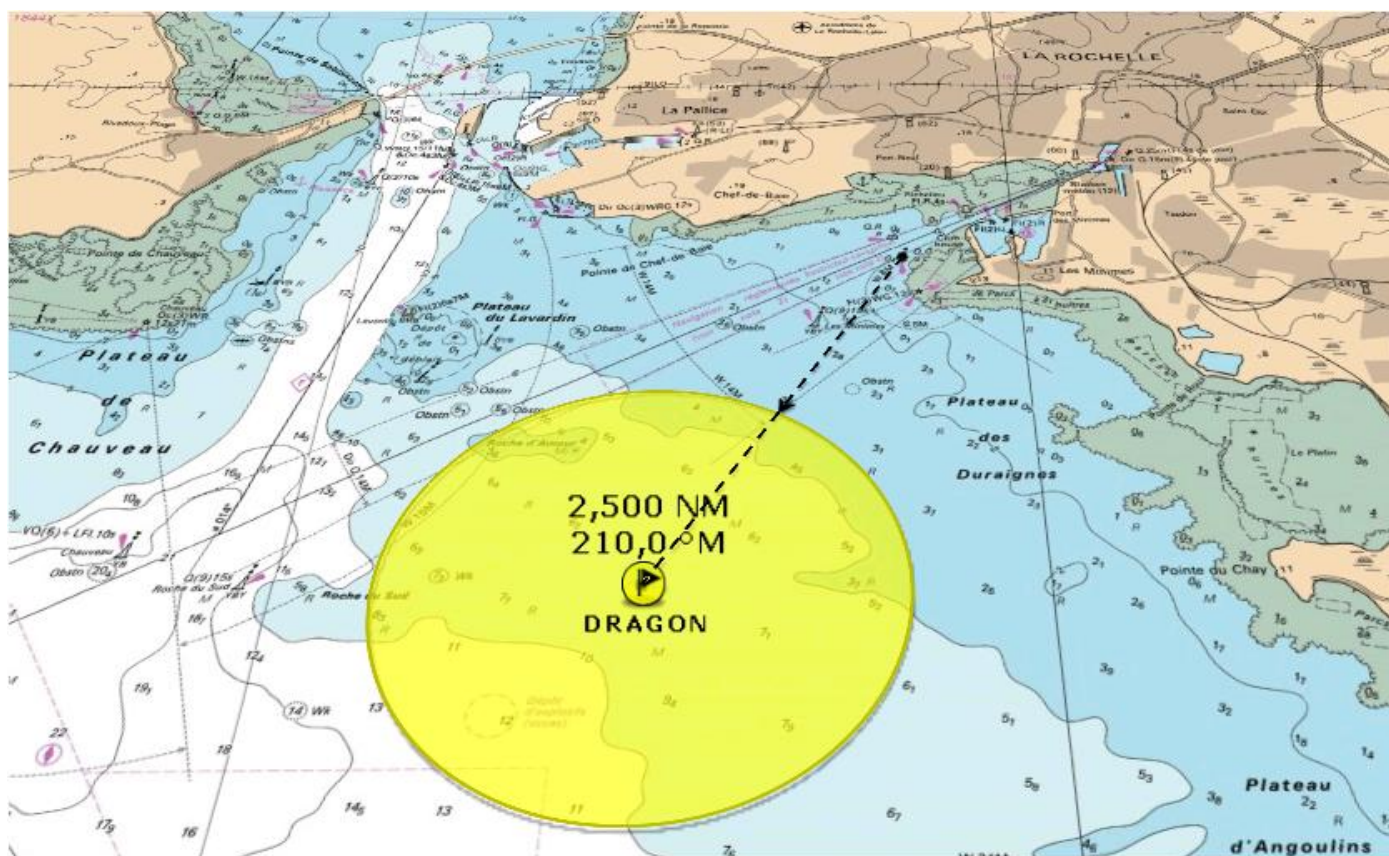
President of the Organising Authority  
Principal Race Officer  
Chairman of the Measurement Committee  
Chairman of the International Jury

Claire FOUNTAINE  
Philippe FAURE  
Marc BROQUAIRE  
Vic De SMEDT





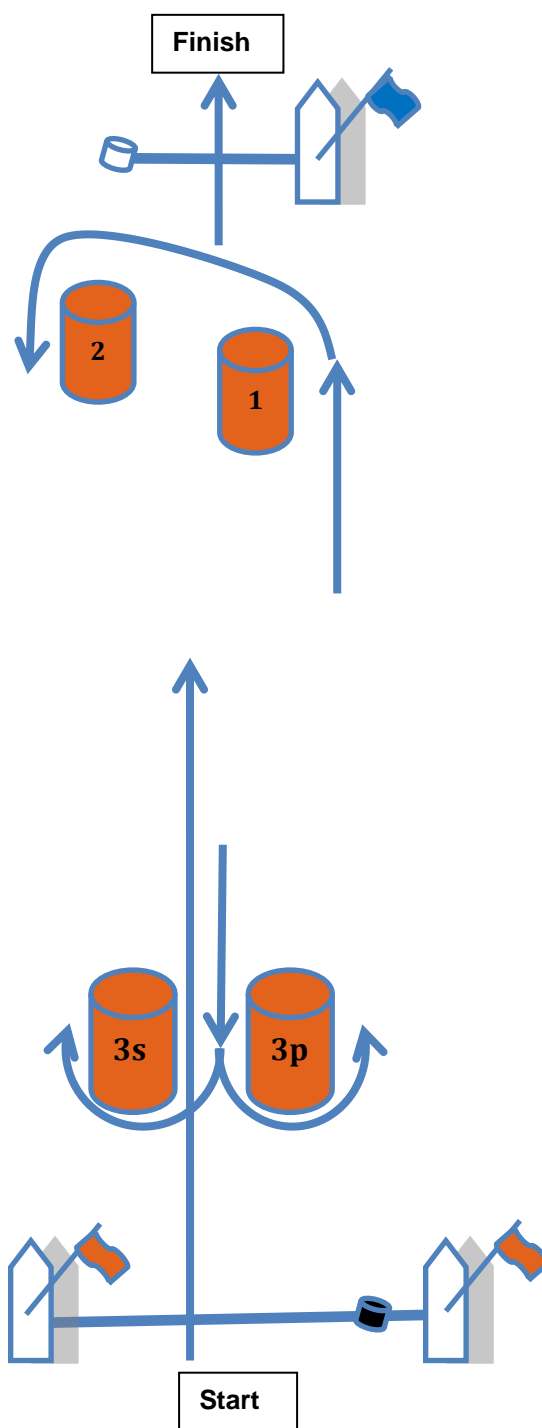
## ATTACHMENT A RACING AREAS



Distance to the middle		Bearing	Latitude	Longitude
2,5 Nm		210°	46°06'35''	01°12'62''

Distances, bearings and positions are advisory only.

## ATTACHMENT B



- All course marks are to be left to port, except marks 3s
- Distance between mark 1 and mark 2: 100m approx.
- Angle between upwind leg and bearing from mark 1 to mark 2: 100° approx.
- Note: This drawing is schematic. The distances and mark positions are not to scale.



## ATTACHMENT C

### FFVoile Prescriptions to RRS 2013-2016

#### RRS 64.3

The jury may ask the parties to the protest, prior to checking procedures, a deposit covering the cost of checking arising from a protest concerning class rules.

#### RRS 67

Any question about or request of damages arising from an incident involving a boat bound by the Racing Rules of Sailing or International Regulation to Prevent Collision at Sea depends on the appropriate courts and will not be dealt by the jury.

#### RRS 70.5

In such circumstances, the written approval of the Fédération Française de Voile shall be received before publishing the notice of race and shall be posted on the official notice board during the event.

#### RRS 78

The boat's owner or other person in charge shall, under his sole responsibility, make sure moreover that his boat complies with the equipment and security rules required by the laws, by-laws and regulations of the Administration.

#### RRS 86.3

An organising authority wishing to change a rule listed in RRS 86.1 in order to develop or test new rules shall first submit the changes to the FFVoile, in order to obtain its written approval and shall report the results to FFVoile after the event. Such authorization shall be mentioned in the notice of race and in the sailing instructions and shall be posted on the official notice board during the event.

#### RRS 88

Prescriptions of the FFVoile shall be neither changed nor deleted in the notice of race and sailing instructions, except for events for which an international jury has been appointed.

In such case, the prescriptions marked with an asterisk (\*) shall be neither changed nor deleted in the notice of race and sailing instructions. (The official translation of the prescriptions, downloadable on the FFVoile website [www.ffvoile.fr](http://www.ffvoile.fr), shall be the only translation used to comply with RRS 90.2(b)).

#### RRS 91

The appointment of an international jury meeting the requirements of Appendix N is subject to prior written approval of the Fédération Française de Voile. Such notice of approval shall be posted on the official notice board during the event.

